

THE ANNUAL
RUBIN REPORT
MUSEUM
OF
ART

2014



Photograph by Michael Palma

TABLE OF CONTENTS

Letter from the Executive Director	5
Exhibitions	6
Publications	7
Education	8
Programming	10
Gifts and Purchases of Art	14
Individual and Institutional Support	18
Individual Membership	20
Corporate Membership	21
Volunteer Support	23
Financial Statements	24



Photograph by Michael Seto Photography

LETTER FROM THE EXECUTIVE DIRECTOR

Dear friends and supporters,

I am pleased to share with you the highlights of our activities in 2014, including acknowledgements of our generous supporters and our audited financial statement.

2014 marked the ten-year anniversary of the Rubin Museum—a significant milestone and reason to celebrate. Since we opened in 2004, we have presented more than one hundred exhibitions, offered thousands of programs, and welcomed more than 1.6 million visitors.

At the Rubin we create experiences that spark new ways of seeing the world and inspire you, the visitor, to make connections between contemporary life and the art and ideas of the Himalayas and neighboring regions. Whether you are touched by a work of art or attend an insightful on-stage conversation or art-making workshop, we want you to leave the Rubin with more than when you entered.

During our first ten years we had the great fortune to establish and grow this institution with the generous support of its founders. We are now entering a new phase, in which we must significantly expand our base of support, transitioning toward greater financial independence. We know it can be done—with your help.

Having gained a distinct position in the cultural landscape of New York City and beyond, our goal is to focus on areas where we can be most uniquely impactful. We will continue the strategy of maintaining a tightly focused collection while using our exhibitions to give voice to the broader region and trans-cultural and contemporary expressions. And we will be sure to occasionally surprise you with unexpected and provocative exhibitions.

Over the past ten years the Rubin Museum has established close ties with individuals and communities, local and worldwide. Being an internationally respected institution as well as a place-centered organization with responsibilities to local constituencies is a challenge and an opportunity. We are committed to using it to continue to inspire associations between the unfamiliar and the familiar, both inside the Museum and across the globe.

We look forward to embarking on our next ten years with you on board.



Patrick Sears
Executive Director

With a nod to its opening day celebration, the Rubin Museum marked its tenth anniversary in 2014 with a festive block party that hosted more than 3,000 guests. Photograph by Michael Seto Photography

EXHIBITIONS

BODIES IN BALANCE: THE ART OF TIBETAN MEDICINE

March 15–September 8, 2014

The first major exhibition to present the origins, history, and practice of a millennium of visual history, *Bodies in Balance* explored the guiding principles of the Tibetan science of healing. Approximately 140 objects dating from the ninth century to the present day demonstrated the advancement of Tibetan medical knowledge as it was codified in medical texts, illustrated in art, demonstrated by medical tools, and made evident by examples of medicines compounded from natural ingredients and applied in practice.

FRANCESCO CLEMENTE: INSPIRED BY INDIA

September 5, 2014–February 2, 2015

Francesco Clemente: Inspired by India looked at the Indian influences in artist Francesco Clemente's work and how they relate to the artistic practices and traditions of various regions in India. The exhibition features approximately twenty works, including paintings from the last thirty years and four new, larger-than-life-size sculptures created especially for the exhibition. In contrast to leading conceptual art practices of the 1970s, Clemente refocused attention on representation, narrative, and the figure and explored traditional, artisanal materials and modes of working.

THE ALL-KNOWING BUDDHA: A SECRET GUIDE

October 3, 2014–April 13, 2015

The All-Knowing Buddha: A Secret Guide focused on an exceptional set of fifty-four paintings in the intimate format of album leaves from eighteenth-century China that illustrate the meditation practice of Sarvavid Vairochana, a primordial buddha central to the Tibetan Buddhist tradition. The album is one of only two in existence to illustrate a secret esoteric practice so explicitly. The presentation at the Rubin was the first time that these important paintings were exhibited in the United States.

WITNESS AT A CROSSROADS: PHOTOGRAPHER MARC RIBOUD IN ASIA

October 16, 2014–March 23, 2015

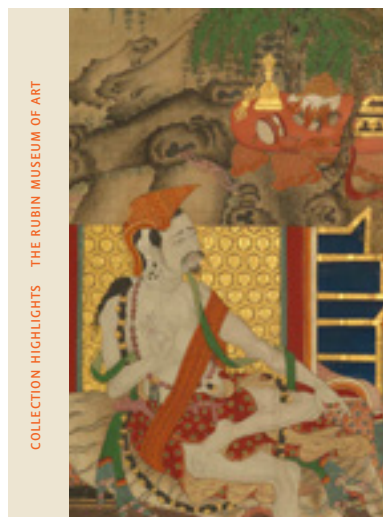
Witness at a Crossroads chronicled French photographer Marc Riboud's journeys across Asia during the mid-1950s and 1960s, a period of great cultural and political transition in the region. More than one hundred arresting black-and-white photographs offered glimpses into everyday life in Turkey, Iran, Afghanistan, Pakistan, India, Nepal, China, and Japan, illuminating tensions between tradition and post-war modernity.

PUBLICATIONS

COLLECTION HIGHLIGHTS

Jan Van Alphen, Beth Citron, Karl Debreczeny, David P. Jackson, Christian Luczanits, Elena Pakhoutova, and Kathryn Selig Brown

This publication, dedicated specifically to the Rubin Museum's collection, features 108 works that were chosen by the curatorial team to offer a sense of the geographic, cultural, and chronological breadth of the Museum's holdings. Stunning visuals are accompanied by brief descriptions that will speak to both lovers of Himalayan art and those who are new to this rich tradition.



FRANCESCO CLEMENTE: INSPIRED BY INDIA

Beth Citron with a contribution from Girish Shahane

In this book accompanying the exhibition *Francesco Clemente: Inspired by India*, curator Beth Citron and scholar Girish Shahane look at Francesco Clemente's artistic process and how traditional Indian art making and culture influenced his work. Clemente remains a touchstone for those engaged with modern and contemporary Indian visual culture and its history.

BODIES IN BALANCE: THE ART OF TIBETAN MEDICINE

Theresia Hofer, editor, with contributions from Pasang Yontan Arya, Sienna R. Craig, Gyurme Dorje, Yang Ga, Frances Garrett, Barbara Gerke, Knud Larsen, Katharina Sabernig, Geoffrey Samuel, Martin Saxer, Ronit Yoeli-Tlalim, and Inger Vasstveith

Bodies in Balance is the first comprehensive and illustrated book dedicated to the history, theory, and practice of Tibetan medicine. The book, which is generously illustrated with more than two hundred images, includes essays by ten experts in the field. The volume brings to life the theory and diversity of this ancient healing art.

EDUCATION

RUBIN MUSEUM BLOCK PARTY

In celebration of the Museum's tenth anniversary, the Museum hosted its first annual neighborhood block party. More than 3,000 people joined in on the fun and were treated to a day of art making, musical performances, gallery tours, and more.

SCHOOL PROGRAMS

To adapt to the changing needs of schools, the Museum expanded the scope of its school residency offerings; In 2014 we began working with new neighborhood schools (PS 33 Chelsea Prep), new audiences (residency with Pre-K classes), and new formats (after-school sessions for High School students to gain art credit for graduation).

TOURS

In addition to two daily tours, the Museum offered specialized monthly access tours for seniors, blind and partially sighted visitors, guests with Alzheimer's or dementia, and those who are deaf or hard of hearing.

FAMILY SUNDAYS

Beginning in March, families with children ages three and up were invited to participate in afternoons full of family-friendly activities every Sunday throughout the year. Family Sundays guests enjoyed art making in the Education Center and family tours and themed searches in the galleries.

ADULT EDUCATION

The Museum launched a series of adult classes offering more committed audiences with ongoing opportunities for deeper connection to the Museum's special exhibitions and permanent collection. Select sold-out courses included Nutritional Health and Happiness, inspired by *Bodies in Balance: The Art of Tibetan Medicine*; Writing and Reflecting through Symbolic Inquiry, focusing on *Francesco Clemente: Inspired by India*; and It's Funny Because It's True: Exploring the Buddhist Truth of Suffering through Comedy, which dove deeply into the Museum's permanent collection.



Photograph by Michael Palma

PROGRAMS

BRAINWAVE: MIND OVER MATTER

What happens in our brains when we attempt to overcome adversity, survive tests of endurance, and stay focused under pressure? This was the subject of the seventh annual Brainwave, a series of on-stage conversations, films, and experiences.

Jan 6 The Performance Artist with Isabella Rossellini and cognitive scientist Diana Reiss

Jan 11 The Cellist with cellist Maya Beiser and cognitive psychologist Jamshed Bharucha

Jan 24 The Ballet Dancer with Wendy Whelan and neuropsychologist Mark Solms

Jan 25 The Social Worker for the Blind with Sabriye Tenberken, writer Rosemary Mahoney, and neuropsychologist Sabine Kastner

Jan 31 The Basketball Champion with Walt Frazier and neuroscientist Paul Glimcher

Feb 5 The Photographer with Frédéric Lagrange and cognitive scientist John J. Sakon

Feb 8 The Monk with the Venerable Metteyya and neurosurgeon Philip Stieg

Feb 8 The Actor with Giancarlo Esposito and neuroscientist Moran Cerf

Feb 12–13 The TM Teacher with Bob Roth and experimental psychologist Barry Cohen

Feb 19 The Zen Teacher with Shinge Roko Sherry Chayat Roshi and neuroscientist Brent A. Field

Feb 21 The Teacher with His Holiness the Drikung Kyabgön Chetsang and neuroscientist Zoran Josipovic

Mar 1 The Astronaut with Scott Parazynski and psychologist Tracy Dennis

Mar 3 The Mogul with Russell Simmons and cognitive neuroscientist David Vago

Mar 5 The Activist with Zainab Salbi and neuroscientist Dean Haycock

Mar 8 The Philosopher with Rebecca Goldstein and neuroscientist Antonio Damasio

Mar 12 The Face Transplant Surgeon with Eduardo Rodriguez and neuroscientist Timothy Buschman

Mar 16 The Poker Player with Vanessa Selbst and psychologist John D. Mayer

Apr 11 The Yoga Teacher with Elena Brower and neuropsychologist Kenneth Perrine

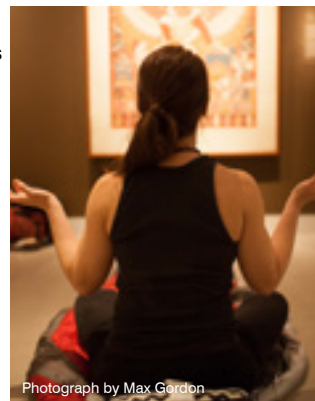
Apr 25 The Math Genius with Jason Padgett and neuroscientist Heather Berlin

May 2 The Congressman with Tim Ryan and neuroscientist Elizabeth Johnston

DREAMOVER

May 10–11, 2014

The Dream-Over is a museum sleepover for grown-ups. Dreamers sleep in the Rubin Museum's galleries under a work of art selected especially for them. A Tibetan lama guides the group in Tibetan dream yoga, and a psychologist explores the meaning of dreams. In the morning a team of dream-gatherers gently nudge dreamers awake and write down their dreams as they recall them. The dreamers are then debriefed in the morning over a traditional Tibetan breakfast of tsampa and yak butter tea.



Photograph by Max Gordon

CLEMENTE X 8

On September 5, 2014, the Rubin opened the first museum exhibition devoted to the extensive Indian influences in Francesco Clemente's work, *Francesco Clemente: Inspired by India*. To further explore the chief motivations in his life and art, the artist took the Rubin stage eight times with eight personalities from very different walks of life. Both Clemente and his guest brought to the conversation a found object that acted as catalyst for a freewheeling conversation.

Oct 1 Clemente x Patti Smith

Oct 22 Clemente x Eric Ripert

Oct 5 Clemente x Robert Lepage

Oct 29 Clemente x Billie Tsien

Oct 7 Clemente x Nas

Nov 5 Clemente x David Chase

Oct 8 Clemente x Gelek Rimpoche

Nov 9 Clemente x Alfonso Cuarón

ARTISTS ON ART

In conversation with *Francesco Clemente: Inspired by India* curator Beth Citron, contemporary artists engaged in informal dialogues about Francesco Clemente's work and their own.

- | | |
|-----------------------|----------------------------------|
| Sep 19 Jeni Spota | Oct 24 Sandeep Mukherjee |
| Sep 26 Fred Tomaselli | Nov 7 David Salle |
| Oct 3 Julian Schnabel | Nov 14 Terry Winters |
| Oct 17 Philip Taaffe | Nov 21 Caledonia Curry aka Swoon |



CABARET CINEMA

For the Museum's series of classic film screenings, the artist Francesco Clemente selected some of his favorites from world cinema.

- | | |
|---|---|
| Sep 26 <i>Le Fleuve</i> introduced by poet Vijay Seshadri | Nov 7 <i>Antonio Das Mortes</i> |
| Oct 3 <i>Viridiana</i> introduced by filmmaker Stella Schnabel | Nov 14 <i>The Hired Hand</i> introduced by playwright Neil LaBute |
| Oct 10 <i>Vivre Sa Vie</i> introduced by film director Matias Piniero | Nov 21 <i>The Holy Mountain</i> |
| Oct 17 <i>Before the Revolution</i> introduced by filmmaker Chiara Clemente | Nov 28 <i>Salo</i> introduced by choreographer Karole Armitage |
| Oct 24 <i>Chappaqua</i> introduced by the filmmaker's son Alexander Rooks | Dec 5 <i>Sacro GRA</i> |

NAKED SOUL

Naked Soul presents performances from some of the country's top singer/songwriters without microphones or amplifiers, as if the music were, acoustically speaking, naked. The musicians in the series draw upon the universal themes inherent in Himalayan art—spirituality, peace, tolerance, wisdom, compassion—on select Friday evenings.

- | | |
|---------------------|--------------------------|
| Feb 14 Susan Werner | Aug 22 Garland Jeffries |
| Mar 7 Mary Gauthier | Sep 5 John Gorka |
| Mar 14 David Wilcox | Sep 19 Janis Ian |
| May 9 Dan Bern | Oct 10 Martha Wainwright |
| May 30 Shelby Lynne | Oct 17 Erin McKeown |
| Jun 6 Shelby Lynne | Nov 7 Melissa Ferrick |
| Jun 13 Jill Sobule | Dec 12 Dana Fuchs |
| Jun 27 Ben Sollee | Dec 26 Nicole Atkins |
| Jul 11 Falu | |

NOURISH, PRACTICE, KNOW

Inspired by the exhibition *Bodies in Balance: The Art of Tibetan Medicine*, Nourish, Practice, Know was a series of events and workshops that explored the power of food, contemplative practice, and life-long learning to help us balance our bodies.

Mar 16 The Knowledge of Healing

Mar 19 Diagnosis – Pulse

Mar 26 Feeding Your Demons: The Life and Work of Lama Tsultrim Allione

Mar 28 Lee Van Zyl and David Crow

Mar 29 In the Garden of Medicine Buddha

Apr 2 The Painted Mantra with Tashi Manno

Apr 5 Mind Winds: The Ecology of Consciousness

Apr 9 Diagnosis II – Dreams

Apr 12 Shamans of the Blind Country

Apr 13 Yoga with Bryn Chrisman of Yogamaya

Apr 16 Diagnosis III – Dreams

Apr 18 Ayurveda: The Art of Being

Apr 30 Healing Herbs

May 14 Yoga with Elena Brower of Virayoga

May 7 Diagnosis IV - Astrology

May 14 Talking Story

May 16 The Healing Modality of Singing Bowls with Suren Shrestha

May 28 A Gesar's Bard Tale

Jun 4 Diagnosis - Death and Dying

Jun 8 Chef's Table: A Jackson Heights Field Trip

Jun 11 Diagnosis - Insomnia

Jun 14 Mind-Body Flux: Where Does Healing Happen?

Jun 25 You Are What You Eat

Jun 29 Yoga with Alison Cramer & Sheri Celentano of Laughing Lotus

Jul 9 The Health Benefits of Yantra Yoga

Jul 16 Diagnosis - Diet

Jul 25 Yoga with Yogamaya & Live Music with The Hanumen: A Feast for the Senses

Aug 16 The Healing Modality of Singing Bowls with Suren Shrestha

Aug 10 Vibrational Sound Therapy

Aug 10 Learn to Heal with Singing Bowls

Aug 13 Diagnosis – Women's Health

Aug 27 Indian Summer



Photograph by Michael Palma

EPIC OF EVEREST

The Museum hosted the New York premiere of a magnificent restoration of one of the most historically significant films of all time: *The Epic of Everest*. The film documents the doomed attempt of George Mallory and Sandy Irvine to scale the world's highest mountain in 1924.

Nov 14

Presented with *AFAR Magazine*, with an introduction by Editor-in-Chief Ellen Asmodeo-Giglio

Nov 19

Presented with NY Section American Alpine Club & American Alpine Club Library, followed by a Q&A with Everest veteran Robert Anderson

Nov 23

Presented with the Weatherhead East Asian Institute and the Modern Tibetan Studies Program at Columbia University, followed by a Q&A with Dr. Robert Barnett

Nov 30

Introduced by Phillip Trimble, who led the successful American expedition to Mt. Everest in 1976

Dec 3

Presented with Outward Bound USA followed by Q&A with Executive Director Steve Matous

Dec 5

Presented with *The Alpinist*, with an introduction by Editor-in-Chief Katie Ives

Dec 13

Presented with the Worcester Polytechnic Institute Alumni, followed by a Q&A with Peter Hansen, author of *The Summits of Modern Man*

Dec 14

Presented with the British Consulate, with an introduction by British Consul General to New York Danny Lopez



FAITH CONNECTIONS

Sep 12–19

How do you find one child among a hundred million people? The Museum presented the New York premiere of Pan Nalin's heart-rending documentary telling the story of three children—one abandoned, one absconded, and one abducted—during the 2013 spiritual ritual Kumbh Mela, the largest gathering of humans on earth.

GIFTS AND PURCHASES OF ART

Tara Protecting from the Eight Fears
Kham Province, Southeastern Tibet; 19th century
Pigments on cloth, silk
Gift of Dr. Michael Henss, Zurich
TC752

Nek Chand (Indian, b. 1924)
Blue Glass Animal
1984–1985
Concrete, ceramic
Sculptures from the Capital Children's Museum "Nek Chand Fantasy Garden" gifted by the National Children's Museum
C2014.1.1

Nek Chand (Indian, b. 1924)
Multicolor Bangle Figure with Vessel
1984–1985
Concrete, ceramic
Sculptures from the Capital Children's Museum "Nek Chand Fantasy Garden" gifted by the National Children's Museum
C2014.1.2

Nek Chand (Indian, b. 1924)
Multicolor Bangle Figure with Vessel
1984–1985
Concrete, ceramic
Sculptures from the Capital Children's Museum "Nek Chand Fantasy Garden" gifted by the National Children's Museum
C2014.1.3

Nek Chand (Indian, b. 1924)
Monkey, gray mortar. Limb & tail break
1984–1985
Concrete, ceramic
Sculptures from the Capital Children's Museum "Nek Chand Fantasy Garden" gifted by the National Children's Museum
C2014.1.4

Nek Chand (Indian, b. 1924)
Small Concrete Figure
1984–1985
Concrete, ceramic
Sculptures from the Capital Children's Museum "Nek Chand Fantasy Garden" gifted by the National Children's Museum
C2014.1.5

Nek Chand (Indian, b. 1924)
Small Concrete Figure
1984–1985
Concrete, ceramic
Sculptures from the Capital Children's Museum "Nek Chand Fantasy Garden" gifted by the National Children's Museum
C2014.1.6

Nek Chand (Indian, b. 1924)
Small Concrete Figure
1984–1985
Concrete, ceramic
Sculptures from the Capital Children's Museum "Nek Chand Fantasy Garden" gifted by the National Children's Museum
C2014.1.7

Nek Chand (Indian, b. 1924)
Small Concrete Figure
1984–1985
Concrete, ceramic
Sculptures from the Capital Children's Museum "Nek Chand Fantasy Garden" gifted by the National Children's Museum
C2014.1.8

Nek Chand (Indian, b. 1924)
Boy with Back Basket, Ceramic Shirt, Clinker Legs
1984–1985
Concrete, ceramic
Sculptures from the Capital Children's Museum "Nek Chand Fantasy Garden" gifted by the National Children's Museum
C2014.1.9

Nek Chand (Indian, b. 1924)
Boy with Front Basket, Clinker Shirt, Ceramic Legs
1984–1985
Concrete, ceramic
Sculptures from the Capital Children's Museum "Nek Chand Fantasy Garden" gifted by the National Children's Museum
C2014.1.10

Wooden Portal to Protector's Shrine
Kham Province, eastern Tibet; ca. 19th century
Wood, cloth, pigments, gesso, varnish
Gift of Bob and Lois Baylis
C2014.3a-h

Twenty-Four Sets of Prayer Beads
China, Japan, Korea, Thailand, Burma, and France; 18th–20th century
Various materials
Gift of Anne Breckenridge Dorsey
C2014.6.1-24

Statue of Figure on Lion
20th century
Metal
TC749

Tara Saving from the Eight Perils
Eastern Tibet; 19th century
Pigments on cloth, silk
Gift of Dr. Michael Henss, Zurich
TC752

Mongolian Nobleman's Eating Set and Flint Strike with Belt Toggle
Probably Urga (Ulaan Baatar), Mongolia, or Dolonor, China (Inner Mongolia); ca. late 18th–early 19th century
Ivory, steel, leather, silver
Gift of Phillip J. Rudko
TC759.1

Five-Panel Crown
Urga (Ulaan Baatar), Mongolia; ca. 19th century
Gilt and polychrome wood
Gift of Phillip J. Rudko
TC759.2





GIFTS AND PURCHASES OF ART, CONTINUED

Collar

Urga (Ulaan Baatar), Mongolia;
ca. 19th century
Silk
Gift of Phillip J. Rudko
TC759.3

Five-Prong Bell and Dorje Set

Probably Urga (Ulaan Baatar),
Mongolia, or Dolonor, China
(Inner Mongolia); ca. late 19th
century
Silver, metal (Li, five metal
compound)
Gift of Phillip J. Rudko
TC759.4a-b

Horpa Nomad Smoke Set

Tibet; ca. late 19th century
Leather, wood, brass, bamboo,
jade
Gift of Phillip J. Rudko
TC759.5a-b

Women's Chatelaine

Eastern Tibet; late 19th–early
20th century
Silk, leather, silver, turquoise
Gift of Phillip J. Rudko
TC759.6

Tsakalis

ca. 1300
Pigments on cloth
Gift of Beata and Michael
McCormick
TC760.1-2

Buchung Nubgya
(Tibetan, b. 1979)
**Stages of a Painting
(Saraswati): Drawing Stage
and Iconometry**
New York, New York; 2014
Paper
SC2014.4.1

Buchung Nubgya
(Tibetan, b. 1979)
**Stages of a Painting
(Saraswati): Primed Canvas
with Drawing and Basic Colors**
New York, New York; 2014
Pigments on cotton, wood,
thread
SC2014.4.2

Buchung Nubgya
(Tibetan, b. 1979)
**Stages of a Painting
(Saraswati): Colors and
Shading**
New York, New York; 2014
Pigments on cotton, wood,
thread
SC2014.4.3

Buchung Nubgya
(Tibetan, b. 1979)
**Stages of a Painting
(Saraswati): Full Thangka with
Brocade Mount**
New York, New York; 2014
Pigments on cotton, silk brocade
SC2014.4.4

Sonam Phuntsok
Maitreya Thangka
Portland, Oregon; 2006
Acrylic on canvas
Gift of Sonam Phuntsok
SC2014.5

**Tara Protecting from
the Eight Fears (Detail)**
Kham Province, Southeastern
Tibet; 19th century
Pigments on cloth, silk
Gift of Dr. Michael Henss, Zurich
TC752

INDIVIDUAL AND INSTITUTIONAL SUPPORT

\$250,000+

The Shelley & Donald Rubin Foundation

\$100,000–\$249,999

Henry Luce Foundation
Shelley & Donald Rubin

\$50,000–99,999

Carlo and Micól Schejola Foundation
E. Rhodes & Leona B. Carpenter Foundation
New York City Department of Cultural Affairs
New York State Council on the Arts

\$25,000– \$49,999

Deutsche Bank
Ellen Bayard Weedon Foundation
Lisina M. Hoch
HSBC
The Pinkerton Foundation
David T. & Beatrice Pritzker
Margot & Thomas Pritzker Family Foundation

\$10,000–\$24,999

Anonymous
Bob & Lois Baylis
Con Edison
The David Rockefeller Fund, Inc.
Matthew & Maggi Goldstein
Hive Digital Media Learning Fund in The New York Community Trust
William E. Mayer
Eric & Alexandra Schoenberg

\$5,000–\$9,999

Anonymous
The Dana Alliance for Brain Initiatives
Noah P. Dorsky
Milton and Sally Avery Arts Foundation
Ann & Matthew Nimetz
Tutcher Family Foundation

\$1,000–\$4,999

Jeffrey Berman
Jane Casey & Bruce Miller
Anne E. Delaney
The Clarence & Anne Dillon Dunwalke Trust
Peggy Dulany
The Frederick P. Lenz Foundation for American Buddhism
Howard Greenberg Gallery
Jeffrey & Leah Kronthal
Richard & Mary Lanier
Sandra Leitner
The Leon Levy Foundation
Arnold & Anda Lieberman
Michael Tuch Foundation, Inc.
Carlton Rochell & Kathleen Kalista
The Rubin-Ladd Foundation
Jeremy Shamos
Jeffrey Small & Eva Ching
Barbara Marcin Ullman

2014 Gala Supporters

\$100,000+

The Pritzker Family

Rasika & Girish Reddy
Shelley & Donald Rubin

\$25,000–\$49,000

Akhoury Foundation
Stanley, Marion, Paul, Sara, Eddie, & Sharon Bergman
Annette Blum & Richard Blum
Fred Eychaner
Agnes Gund
Eva & Yoel Haller
Jones Lang LaSalle Brokerage, Inc.
New York Life
Matthew & Ann Nimetz
The Shelley & Donald Rubin Foundation
Carlo & Micól Schejola Foundation

\$10,000–\$24,999

Bob & Lois Baylis
Big Apple Circus
Bonhams
Samuel Botero & Emery von Sztankoczy
City University of New York
CTC | MyCFO
Noah P. Dorsky
Hamlin Capital Management
Victor & Tara Menezes
Saroj & Sreedhar Menon
MultiPlan, Inc.
Neera & Deepak Raj
Jonathan F.P. and Diana Rose
Andrew Sabin Family Foundation
Eric & Alexandra Schoenberg
Sikh Art & Film Foundation
Manoj & Rita Singh

Tiffany & Co.
Uovo
Vana Retreats
Xhema of New York, Inc.

\$5,000–\$9,999

Gavin R. Berger
Eileen Caulfield Schwab
Mirka Christenson
Christie's
Barbaralee Diamonstein-Spielvogel and Ambassador Carl Spielvogel
Anuradha Duggal
Hodgson Russ, LLP
Jill Iscol
Donna & Stewart Kohl
Ginger & David Komar
The MCJ Amelior Foundation
Manish & Ritu Mittal
Adam Offenhartz
Deven & Monika Parekh
Sotheby's
Marsha Williams

\$2,500–\$4,999

American Chai Trust
Kenneth & Nira Abramowitz
Cynthia Guyer
Peter Hutchings & Martha Wolfgang
Mitchell Kline
Sarah & Victor Kovner
Richard & Mary Lanier
Ila Paliwal
Nicholas Pavlik & Joe Dezzi
Prestige Estates Properties Limited
Basha Frost Rubin & Scott Grinsell
Nisha & Mohit Sabharwal

George Selden
Harvey Sigelbaum
Winged Keel Group, Inc.
Zubatkin Owner Representation

\$1,000–\$2,499

Stan & Claire Altman
Kim Brizzolara
Anne Dorsey
Cynthia Elden
Alyce Fay Cleese
Jonathan H. Goodman
& Robin A. Henry
Ronnie & Peggy Gross
Warren & Gina Handelman
Nayef Homsí
James & Mary Ellen McCarthy
David Nalin
The Pollock-Krasner
Foundation
Purpose
Dame Jillian Sackler
Beverly Zabriskie



Photograph by Michael Seto Photography

A Tibetan procession heralds the opening of the Museum's tenth anniversary gala

INDIVIDUAL MEMBERSHIP

Chairman's Circle

\$10,000

Fred Eychaner
William E. Mayer
David & Beatrice Pritzker
Clarene Dong Rosten
Henry P. Van Ameringen

Chairman's Circle

\$5,000

Anne E. Delaney
Jennifer Diamond
Noah P. Dorsky
Patricia & Peter Gruber
Barbara Marcin Ullman
Eileen Caulfield Schwab
Harvey & Barbara Sigelbaum
Jon Stryker
Ilse G. Traulsen
Robert & Ann Walzer

Chairman's Circle

\$2,500

Ravi & Virginia Akhoury
Bob & Lois Baylis
Lisa Cavallari
Dinyar S. Devitre
Rita & Arun Duggal
Kathleen Gallagher
William & Beatrice Helman
Atul Khanna
Ann & Matthew Nimetz
Nicholas Pavlik
Amy & Robert Poster
Basha Frost Rubin
& Scott Grinsell

Chairman's Circle

\$1,000–\$1,500

Kenneth & Nira Abramowitz
Luis & Judith Alvarez

Loreen Arbus
Helen-Jean Arthur
Martin & MaryAnn Baumrind
Christopher & Francesca Beale
Charles C. Bergman
Kim R. Brizzolara
Elizabeth & Jay Chandler
Barbara & Ray Dalio
Rohit & Katharine Desai

Arun & Rita Duggal
Joseph Fazio
Alexandra Garrison
Tommy Yang Guo
Eva & Yoel Haller
Marc Hanrahan
Lisina M. Hoch
Peter L. Hutchings & Martha
Wolfgang

Anna Ivara
Maxwell Joseph
Raman & Vinita Kapur
Eric Krasnoff
Richard & Mary Lanier
Lynn Levenberg
Stuart Leyton & Linda
Wambaugh
Kumar Mahadeva & Simi Ahuja
James & Mary Ellen McCarthy
Michael & Beata McCormick
James & Ana Melikian
Sreedhar & Saroj Menon
David R. Nalin
Mark Norell & Vivian Pan
Thomas & Margot Pritzker
David & Jennifer Ritter
Jim & Terry Ruddy
Alfred & Ann Ruesch
Andrew Sabin
Lynn Schneider
Eric & Alexandra Schoenberg
Bob Schulz

Ami Shah & Kamesh Nagarajan
Sarah & Howard Solomon
Stephen & Constance Spahn
Erich Theophile
Susy & John Wadsworth
Jeffrey & Suzanne Walker
Beverley Zabriskie
Yijun Zhu & Jin Li

Associate

\$500

Krishnamurthy Aiyer
Pavlos Alexandrakis
Claire & Stan Altman
Joy Brenner
Gabriel & Jerilyn Caprio
Fred Cordero & Jessica Sporn
Walter Curchack & Stacy
Thomas
Stephen & Sharon Davies
Errol Dawkins
John & Fausta Eskenazi
Christopher Fussner
Maxwell Gimblett
Zachary & Jacqueline Goldstein
Ellen Grace
Joan Kedziora
Anthony Korner & Justin Spring
Elissa Kramer
Johanna Lasker
Roger & Susan Lipsey
Brian & Florence Mahony
Kendall Martin
Sonny & Gita Mehta
Bella Meyer
Peter J. Miscovich
Harold & Ruth Newman
Paul C. Opperman
Rajeev Pandya
Diana & Eugene Pinover
Marvin & Evie Rich

Beth Rudin DeWoody
Dennis & Regina Santella
Laura Schener
Mary Slusser
Larry Sullivan
Joel Truman
Sandra & George Weiksner
Jeffrey & Cynthia Wiesenfeld

CORPORATE MEMBERSHIP

Corporate Friend (\$10,000)

Alternative Investment Group
Services, L.P.
American Express
Commerzbank
Con Edison
Henry Schein, Inc.
NBC Universal
Newbury Partners LLC
Paul, Weiss, Rifkind, Wharton &
Garrison LLP
Simpson Thacher & Bartlett LLP

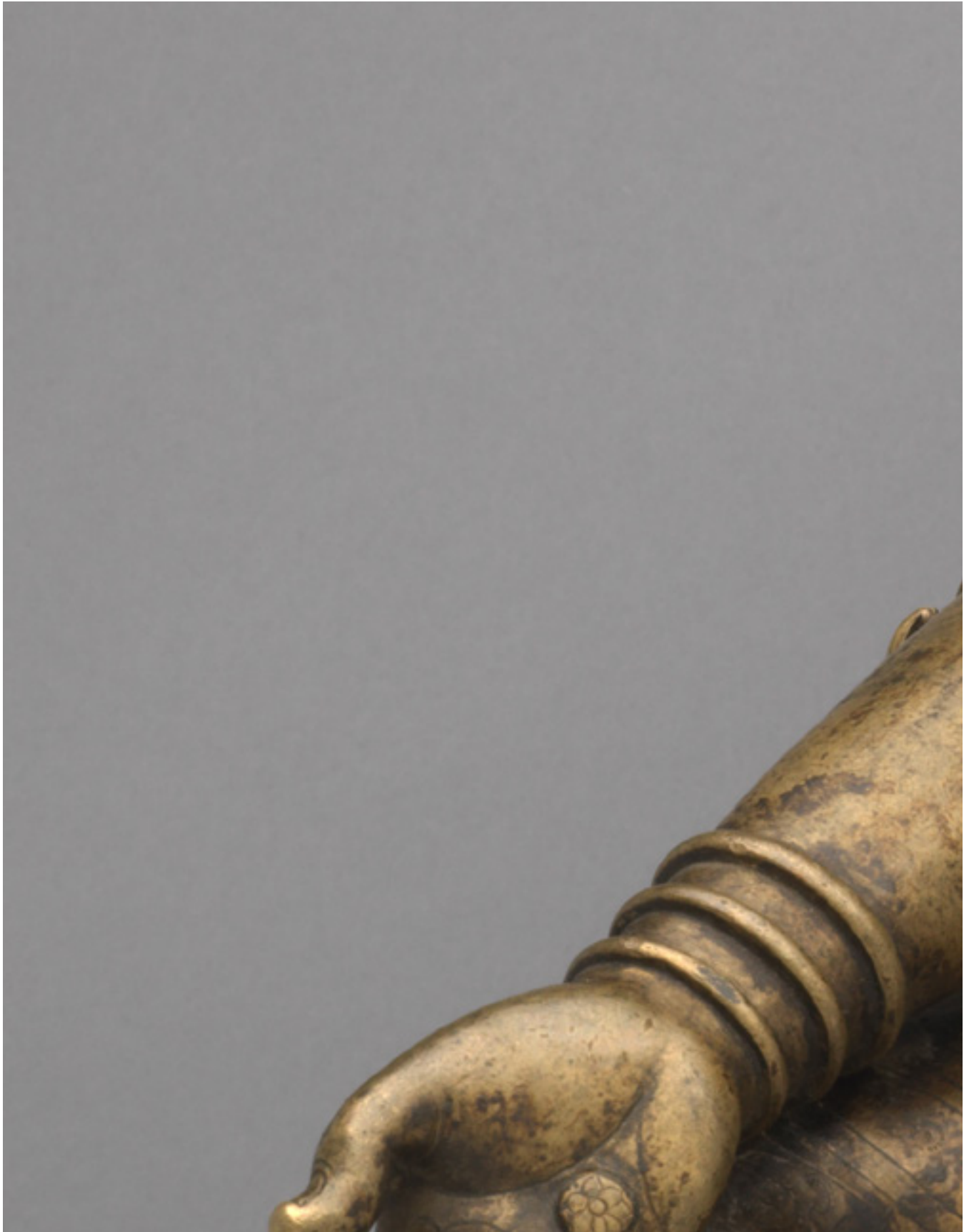
Corporate Donor (\$5,000)

Abrams Books
AB – Bernstein Private Wealth
Management
Bloomberg
The Charles A. Dana Foundation
Credit Suisse
Estée Lauder Companies, Inc.
Michael Bastian, Inc.
North American Publishing Company
RSG Media Systems, LLC
Sotheby's
Stephen STARR Events
White & Case
Winged Keel Group, Inc.



Photograph by Michael Seto Photography

To mark the opening of the exhibition *Bodies in Balance: The Art of Tibetan Medicine*, the Rubin held its first Asia Week celebration, welcoming 700 Asian art and museum enthusiasts to explore the galleries and celebrate the Museum's anniversary.



VOLUNTEER SUPPORT

Annette Cohen	Marylou Dodge	Donna Kogan	Venkatesh Sandilya
Janet Abraham	Megan Doyle	Linda Koralek	Martin Schachter
Shirley Adams	Elena Dubus	Phil Kovacevich	Barbara Schachter
Asli "Asla" Altov	Robert Dudley	Judy Kriendler	Robert Schaecher
Tenzing	Jennifer Eberhardt	Alexis La Porte	Brigitte Seidel
Andrugtsang	Barb Ehlers	Diane Lee	Marilyn Selig
Bridget Bartolini	Lina Estrada	Jena Liang	Alison Selover
Sarah Batchelor	Alannah Fehrenbach	Bixuan Liu	Sandra Shahinian
Pamela Berns	Harriet Feldman	Antoinette	Leitner
Patricia Bouley	Emily Fitz-Randolph	Maclachlan	Karen Shaw
Trudy Brady	B.J. Atwood Fukuda	Julianne Maeda	Madelaine Shellaby
Martine Broeders	Joanna Gangemi	Lama Makarem	Tess Sholom
Ellen Brown	Rajasekhar Ghanta	Wendy Maurice	Nitisha Shresha
Leslie Browning	Muriel Goldman	Lisa McDonald	Demetrius Siatos
Anna Callahan	Karen Gorstayn	Danielle McFall	Cindy Sibilsky
Tacquice Campbell	Karen Gorstayn	Dianne McKenna	Ruth Siegel
Dorothy Cancellieri	Nina Goss	Cecily McKeown	Anu Sieunarine
Tara Canty	Paul Groncki	Tema McMillan	Sharon Slowik
Christine Carey	Emily Haidet	Philip Menchaca	Nicole Smith
Kiernin Carroll	Cathy Han	Oscar Mendez	Arlene Spiller
Yuria Celidwen	Ed Hankin	Erika Miele	Karen St. Pierre
Sonali Chandra	Sherry Harris	Laurie Moody	Raghusimha "Raghu"
Hirondelle Chatelard	Bonnie Harwayne	Kamla Motihar	Sudhakara
Yufei Chen	Roberta Hickey	Manashi Mukherjee	Chelsea Sue
Yoon Chung	Larry Hoffner	Denise Murphy	Linda Sweet
Joyce Chung	Elsa Homberg-	Nidhi Nair	Marcia Tammi
Lauren Coles	Pinassi	Carol Novack	Mike Tapp
Louise Copp	Chuck Hyman	Natalie Oretsky-	Helen Tepper
Linda Corby	Suzanne Inhaber	Cohen	Jean Thies
Rhoda Cosme	Nancy Jackson	Nuala Pacheco	Laurie Tomasino
Arlene Curinga	Sarah Jimenez	Nupur Patel	Sabrina Vaidya
Neysela Da Silva-	Suniti Kanodia	Briana Patton	Erin van Schendel
Reed	Vicky Karkazis	Annie Pichard	Anthony Verga
Arlene D'Abreo	Gurdip Kaur	Nancy Quin	Marcy Viboch
Alan Dapena	Suzannah Kellner	Nitin Ron	Linda White
Clive de Freitas	Lani Kennefick	Daniel Rosemarin	Dawa Yangzom
Alexander	Farrah Khatibi	Jeffrey Ross	Ying Zheng
Deschamps	Tasha Kimmet	Elsa Ross-Greifinger	Karen Zhou
Justin Dewey	Christopher	Beverly Ruiz	Runxiao Zhu
Chiara Di Lello	Kirkwood	Dawn Ryan	

Green Tara (detail); Tibet; 13th century; brass with inlays of silver; C2005.16.30 (HAR 65453); photograph by Bruce M. White

STATEMENT OF FINANCIAL POSITION

at December 31, 2014

ASSETS

Current Assets

Cash and cash equivalents	\$707,762
Unconditional promises to give	32,000
Restricted for future periods and programs	16,362,349
Accounts receivable	134,114
Inventory	871,457
Prepaid expenses and other current assets	222,908
Investments in marketable securities	128,397,872
Total Current Assets	\$146,728,462

Property and Equipment **\$42,902,226**

Total Assets **\$189,630,688**

LIABILITIES AND NET ASSETS

Current Liabilities

Accounts payable and accrued expenses	\$1,184,224
Tenant security deposits	104,447
Deferred membership and other income	14,250
Total Current Liabilities	\$1,302,921

Net Assets

Unrestricted	
Board-designated funds	\$113,671,808
Other unrestricted	44,429,725
Temporarily restricted	5,704,599
Permanent restricted	24,521,635
Total Net Assets	\$188,327,767

Total Liabilities and Net Assets **\$189,630,688**

STATEMENT OF ACTIVITIES

For the year ended December 31, 2014

REVENUES AND OTHER SUPPORT

Public Support

Contributions and donations	\$24,707,837
Grants and sponsorships	605,820
Special event revenue	1,151,978
Less: direct expenses	(317,352)
Membership dues	592,642
Total Public Support	\$26,740,925

Revenues from Programs and Activities

Museum admission fees	\$360,706
Program fees	415,594
Facility rental income	397,580
Merchandise and catalog sales	732,940
Other revenue	307,094
Total Revenue from Programs and Activities	\$2,213,914

Rental Income	\$1,093,443
Net Investment Income	\$4,350,223

Total Revenues, Gains, and Other Support **\$34,398,505**

EXPENSES

Program Services

Collections and exhibitions	\$4,942,495
Publications	508,942
Education	2,035,554
Public programs	1,046,598
Shop	976,501
Public relations and marketing	2,033,576
Total Program Services	\$11,543,666

Supporting Services

Management and general	\$3,913,116
Development and special events	1,290,150
Total Supporting Services	\$5,203,266

Real Estate Operations **\$480,341**

TOTAL EXPENSES **\$17,227,273**

Non-Operating Activity: Gain on Sale of Fixed Asset **\$45,732,187**

Change in Net Assets **\$62,903,419**

